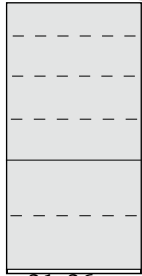


### Basic Style

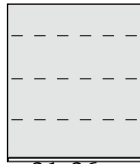
(<sup>3</sup>/<sub>4</sub>" finished thickness, solid bookcases)

Add 20% for <sup>7</sup>/<sub>8</sub>" finished thickness or Shaker Style. Add \$100 for rounded edges.



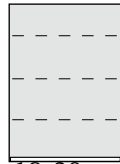
12d x 31-36w x 72h  
4 adj. shelves

oak, birch \$ 980  
maple, cherry 1,025  
mahogany, walnut 1,130



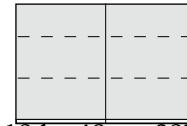
12d x 31-36w x 42h  
3 adj. shelves

\$ 640  
670  
740



12d x 19-30w x 42h  
3 adj. shelves

\$ 600  
630  
695



12d x 48w x 32h  
4 adj. shelves

\$ 855  
900  
990

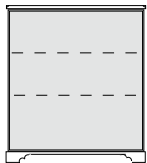


12d x 18-30w x 72h  
4 adj. shelves

\$ 920  
965  
1,060

### Near-Classic Style

(Shaker sides with cove top & scallop pedestal)



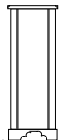
13d x 32-37w x 42h  
2 adj. shelves

oak, birch \$ 970  
maple, cherry 1,020  
mahogany, walnut 1,125



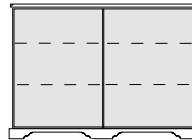
13d x 20-31w x 42h  
2 adj. shelves

\$ 875  
920  
1,015



13d x 49w x 30 1/2h  
4 adj. shelves

\$ 1,240  
1,305  
1,440



14d x 40w x 48h  
3 adj. shelves

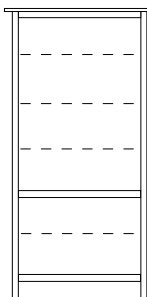
\$ 1,060  
1,115  
1,230



14d x 34w x 48h  
3 adj. shelves

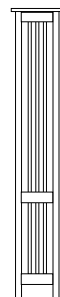
\$ 950  
1,000  
1,100

### Crofter's Style



Crofter's Bookcase  
14d x 40w x 78h

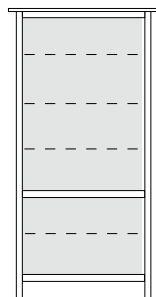
oak, birch \$ 1,475  
maple, cherry 1,550  
mahogany, walnut 1,710



Crofter's Bookcase  
14d x 34w x 72h

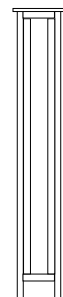
\$ 1,355  
1,425  
1,570

### Craftsman Style



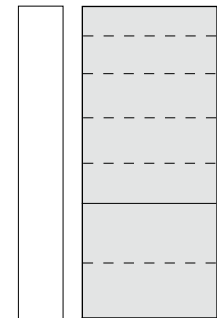
Craftsman Bookcase  
14d x 40w x 78h

\$ 1,685  
1,770  
1,955



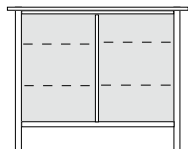
Craftsman Bookcase  
14d x 34w x 72h

\$ 1,560  
1,645  
1,810



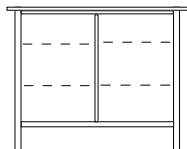
Basic <sup>3</sup>/<sub>4</sub>" thick  
12d x 31-36w x 84h

\$ 1,200  
1,265  
1,395



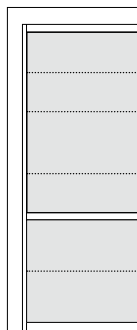
**Craftsman**  
14d x 48w x 38h

oak, birch \$ 1,365  
maple, cherry 1,435  
mahogany, walnut 1,580



**Crofter's**  
14d x 48w x 38h

\$ 1,195  
1,255  
1,385



### Wall unit

bookcase  
12d x 32w x 82t  
with 4 adj. shelves  
12" deep

\$ 1,245  
1,305  
1,440



### Linnaea

bookcase  
39w x 79t  
12 1/4" deep at top  
15" deep at floor

\$ 1,425  
1,500  
1,650

Sizes are given as largest, outside wood dimensions. Other sizes are available as custom requests.

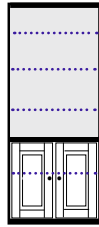
32" wide x 18" deep x 82" tall  
(any wall unit may be made wider, up to 36", for 12% custom fee)



A

4 adj. shelves

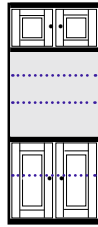
oak, birch \$ 1,315  
maple, cherry 1,380  
mahogany, walnut 1,520



B

4 adj. shelves

\$ 1,705  
1,790  
1,970



C

3 adj. shelves

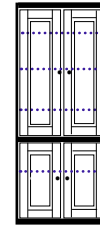
\$ 2,140  
2,250  
2,475



D

3 adj. shelves

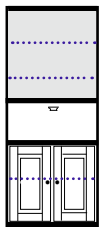
\$ 2,155  
2,265  
2,495



E

4 adj. shelves

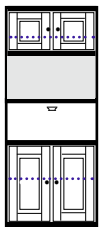
\$ 2,200  
2,315  
2,550



F

3 adj. shelves

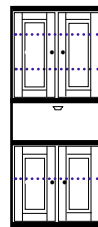
oak, birch \$ 2,410  
maple, cherry 2,535  
mahogany, walnut 2,790



G

2 adj. shelves

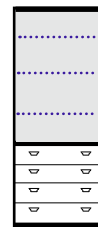
\$ 2,850  
2,995  
3,295



H

3 adj. shelves

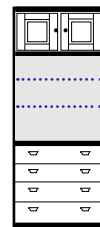
\$ 2,805  
2,950  
3,245



I

3 adj. shelves

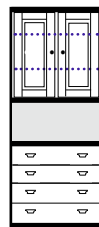
\$ 2,025  
2,130  
2,345



J

2 adj. shelves

\$ 2,460  
2,590  
2,850



K

2 adj. shelves

oak, birch \$ 2,475  
maple, cherry 2,605  
mahogany, walnut 2,865



L or L-pullout

3 adj. shelves

\$ 2,520  
2,655  
2,920



M

2 adj. shelves

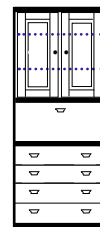
\$ 2,725  
2,870  
3,155



N

1 adj. shelf

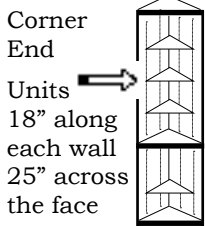
\$ 3,165  
3,330  
3,665



O

2 adj. shelves

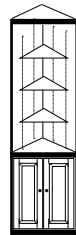
\$ 3,080  
3,245  
3,570



P

4 adj. shelves

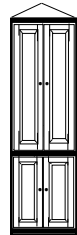
oak, birch \$ 1,310  
maple, cherry 1,380  
mahogany, walnut 1,520



Q

4 adj. shelves

\$ 1,705  
1,790  
1,970



R

4 adj. shelves

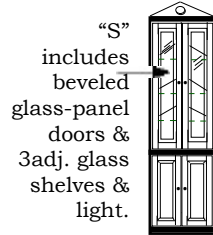
\$ 2,200  
2,315  
2,550



S

4 adj. shelves

\$ 2,310  
2,430  
2,675



"S" includes beveled glass-panel doors & 3adj. glass shelves & light.

Desks include organizers. Glass panels (instead of wood panels) in the doors are optional at \$35 per pair, beveled or flat. Add \$80 for a canister light with one push-button switch or \$95 with a touch dimmer.

Orders must indicate: *"traditional"* (as drawn: handles are brushed brass; doors are solid raised panel) OR *"craftsman"* (used with Craftsman Panel beds: with wood pegs and recessed-flat panel doors) OR *"tansu"* (our unique solid, raised-flat panel doors; handles and knobs in any of the four finishes on the Colonial Bronze handle board.)